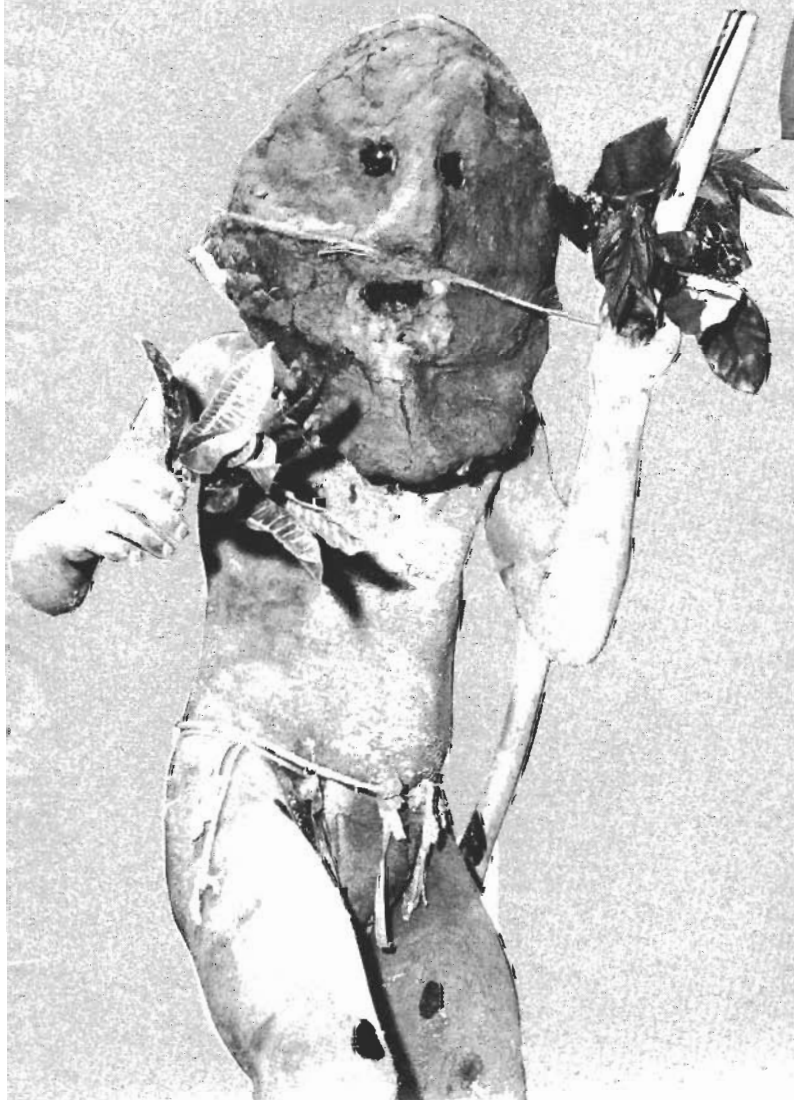


# Bougainville Copper Concentrates

VOLUME TWO / NUMBER NINETEEN  
OCTOBER, 1972

## High School opens

The new Arawa High School was opened on September 15 by Minister for Education, Mr. Ebia Olewale, seen here talking to headmaster Mr. Peter Elias. Full story on page 10.



## *Mud men*

A Mud Man takes the field at the National Day Wakunai Show. This issue four pages on the Wakunai, Arawa and Panguna celebrations.



Scenes from the Rugby final.



## Sports news

The RUGBY season is over for 1972 and what a grand final it was. The Rugby committee are to be congratulated on their organisation of the P.A. system and the small stand that was placed in position for this big day. The introduction of each player as they ran onto the ground was received with a great deal of enthusiasm.

The game itself was a thriller. Kumul settled down immediately while Hiri took a little time to get into their stride. Kumul had 5 points up before Hiri scored their first try; they missed the conversion. Kumul then scored another try with a fantastic individual effort by Captain, Esau Lagar; he must have covered a good 75 yards to score in the corner. However Hiri replied with their second try and at half time the scores read Kumul - 8, Hiri - 6.

In the second half Kumul were again quickly away and at one stage it looked as if they were going to run out quite easy winners; but then Hiri gradually made up the leeway and, with a short time to go, levelled the scores. Then with only a couple of minutes to go Kumul quickly moved into Hiri territory and scored a well earned try. This was converted right on the siren with the final scores being Kumul - 19, Hiri - 14.

RUGBY - President Report:- Herb Steiner's wind up report is as follows:

Congratulations to Kumul coach Simon Bonga, Captain, Esau Lagar and his team in winning the Bougainville Rugby League premiership for 1972.

The competition has been a success, and I would like to thank the various club managers, coaches, captains and players of Hiri A, Marshall Lagoon A, Tura, Kumul, Hiri B, Brothers, Marshall Lagoon B, and Toniva sport club, for their assistance to the rugby committee in enabling this competition to take place. This year will be remembered as the foundation year of the Bougainville Rugby League Association.

On July 13 we were visited by the B.S.I.P. team which was a great success. This visit, I hope, will become an annual event. It is hoped in 1973 the Bougainville Rugby League Association will affiliate with Papua New Guinea to enable us to participate in inter-territory competition. For players interested in playing rugby union, training will commence October 15 at Toniva and we will be selecting a touring team to visit Honiara and surrounding islands early 1973.

Ron Bibby, Manager of the representative AUSTRALIAN RULES side who played a Rabaul representative side reports on the game as follows:-

The Bougainville Football League, formed only this year, journeyed to Rabaul to play against a combined Gazelle Peninsula team on September 23. The result was an outstanding win for us by 47 points with the scores at the end of the game being 15-12, 102 to 9-3, 57.

The game opened at a blistering pace with both sides showing some degree of nervousness. Bougainville, constantly in attack and winning in nearly every position, opened a six goal burst through the agency of Quim Pidik, while the combined side from Rabaul could only manage one goal.

The second quarter was the best from the visitors point of view, as with constant drive from the centre, magnificent handball and teamwork, they were able to score 5 goals against a strong blustery wind. The rucks in this quarter completely dominated the game by placing themselves in advantageous positions to tap the ball to their rovers and rise to great heights while resting on the forward line to take many spectacular marks.

The home side could only manage two goals.

The play in the third quarter seesawed from one end to the other with both teams feeling the effect of the midday heat. Spike "Lagoon" Milligan came off the ground midway through this quarter and was replaced by Bernard Vogae. Both sides managed only two goals each.

The last quarter saw the visitors constantly in attack and managed two goals to Gazelles one until with five minutes to go, we saw the home side kick three goals in as many minutes. The last 10 minutes saw 3 players from Bougainville writhing on the ground with leg cramps.

To try and select the best player on the ground for Bougainville was an extremely difficult task as the team played as a brilliant combination. However, two were given equal honours, namely Captain, Frend Ane, ruck, and Henoa Afora, centre. La Au, rover, Raphael Govea, wing, Quim Pidik, ruck-rover and Vice Captain Henry Kavanamur, represented some of the other best players.

A "BIG" thank you must be given to BCP for their support and to those persons in Rabaul for the part that they played in the organisation of this, our first trip.

Well the cradle of BOXING, as my "spy" from the coast calls the Loloho Boxing Club, didn't do too well on September 15. All Panguna boxers turned up but the cradle was bare and we could only put on a few fights. Nevertheless on September 22 at Panguna the boxing saw some really good bouts. I must remind everyone that persons under the age of 18 years are not permitted in the ring area as this is licenced premises. This means you can't bring your kids unfortunately. Paul Gallo who was fighting Donald Hauko (the territory welter champion) tore a muscle in his shoulder and will be out for a couple of weeks. Panguna's Jack Luff was defeated by Gabriel from Loloho who is one of their keenest and most consistant fighters.

Programme of boxing is as follows:-

29/9/72 - Nil  
6/10/72 - Loloho  
13/10/72 - Panguna  
20/10/72 - Loloho  
27/10/72 - Nil

The CRICKET season starts on October 7 and it would appear that we have five definite teams with a possibility of six - Loloho being the 6th. All teams are training hard at the moment and social games each weekend are organised so all looks well for the coming season.

The SPORTS STORE is open for the drawing of equipment as follows:-

Mon - Fri - 7.30 a.m. - 5.30 p.m.  
Sat - 8.00 a.m. - 4.00 p.m.  
Sun - 8.00 a.m. - 10.00 a.m.  
3.00 p.m. - 5.30 p.m.

Unfortunately, I didn't get enough starters for the RABAU CHARTER. This is rather surprising as I only wanted 30 people. However, I will put another charter on to Rabaul late November. I am also negotiating for a charter to HONIARA at the beginning of December, as it is hoped to bring up a party of 80 Gilbertese dancers from Honiara to put on shows in Kieta/Arawa and Panguna, and if we can use the aircraft transporting these dancers to Kieta we should be able to charge very cheap fares. More later.

RON HERRICK

---

Concentrates is edited by John Eccles, John Wakaria and John Pippin. Photographer, Brian Wendt

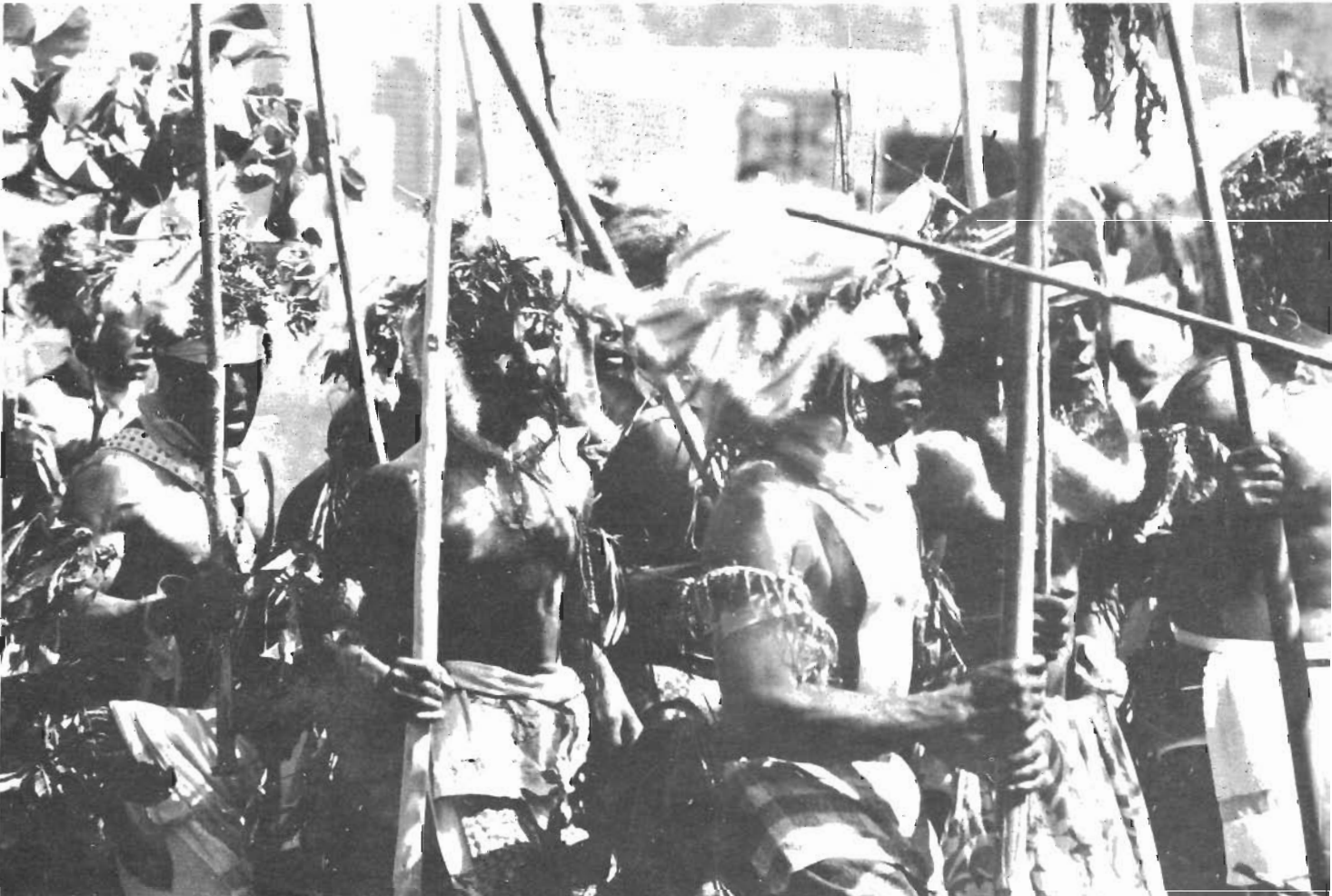


Above, Panguna sports organiser Simon Bonga (right) with policeman Wain Daega, who won the 100 metres and Seli, training, who was deadheat first in the 800 metres. Centre, the tug-of-war. Top, high jump competitor.



# Panguna singsing

Do you recognise any of these men? They all work for BCP. It was National Day and time for the traditional dancing. Below is the winning team, Wapanamanda; next to them is the Tolai group who came second. The Tolais beat each other with thin sticks, making a tremendous cracking noise as the sticks broke against arms or legs. Bottom, the Wabag group who came third.



# At Wakunai

Wakunai was undoubtedly the biggest and best of the island's National Day celebrations. As well as singsings and speeches, there was cattle judging, climbing the greasy pole and bicycle racing.

The Bougainville dancers, while not so extrovert as the Highlanders, were very authentic. Picture right shows upe (traditional hat) wearers from Rotokas and Aita entering the field. Some are carrying bows and arrows, others the "fight stick".



## BCP PRESS STATEMENT

Mr. F. F. Espie, Chairman of Bougainville Copper Pty. Limited, on September 22 announced the appointment of Mr. Mekere Morauta as an additional Director of Bougainville Copper Pty. Limited.

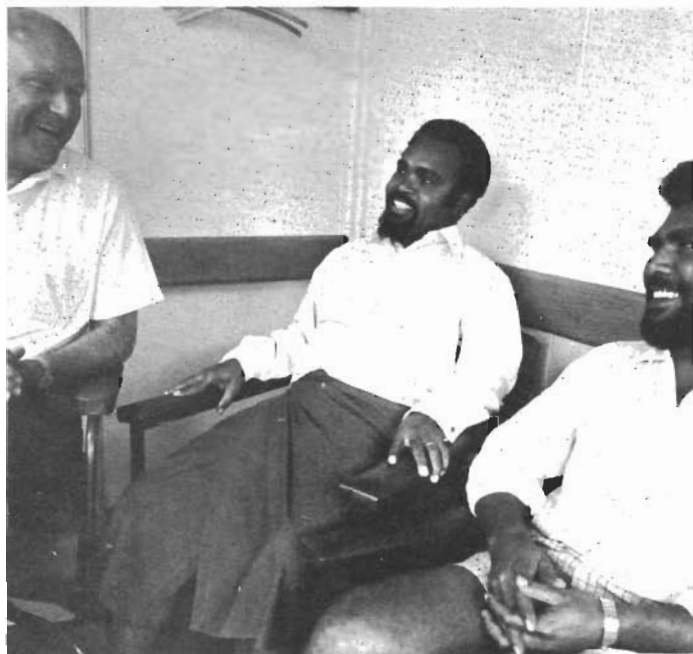
Mr. Morauta's appointment becomes effective from November 1.

On behalf of the Board of Directors, and himself, Mr. Espie stated he was particularly pleased to welcome Mr. Morauta's acceptance of the Directorship and looks forward to a full and valuable future association.

Mr. Mekere Morauta is from the Gulf District of Papua New Guinea and is a member of the staff of Programming and Co-ordination.

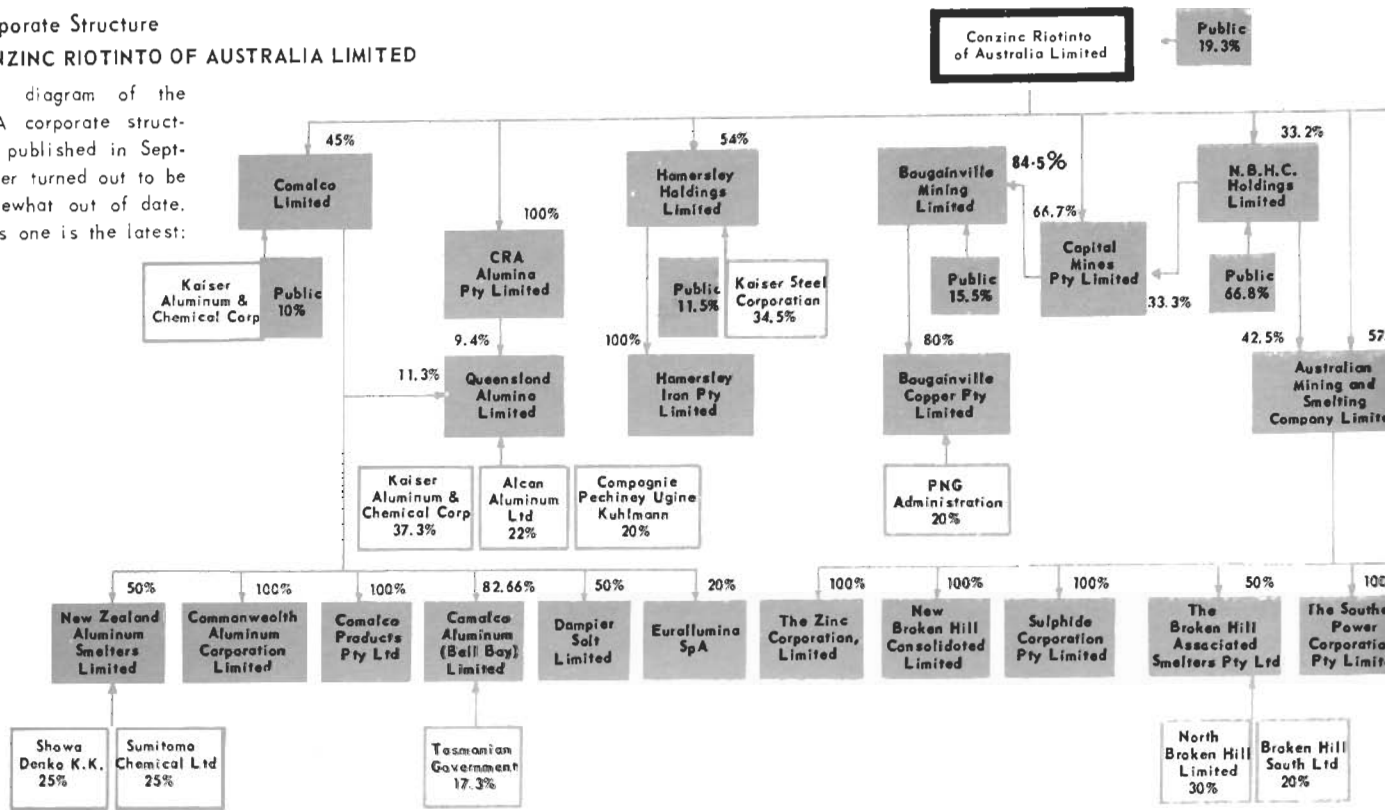
Mr. Espie also announced that the official opening of the mine would take place on November 30 at Panguna.

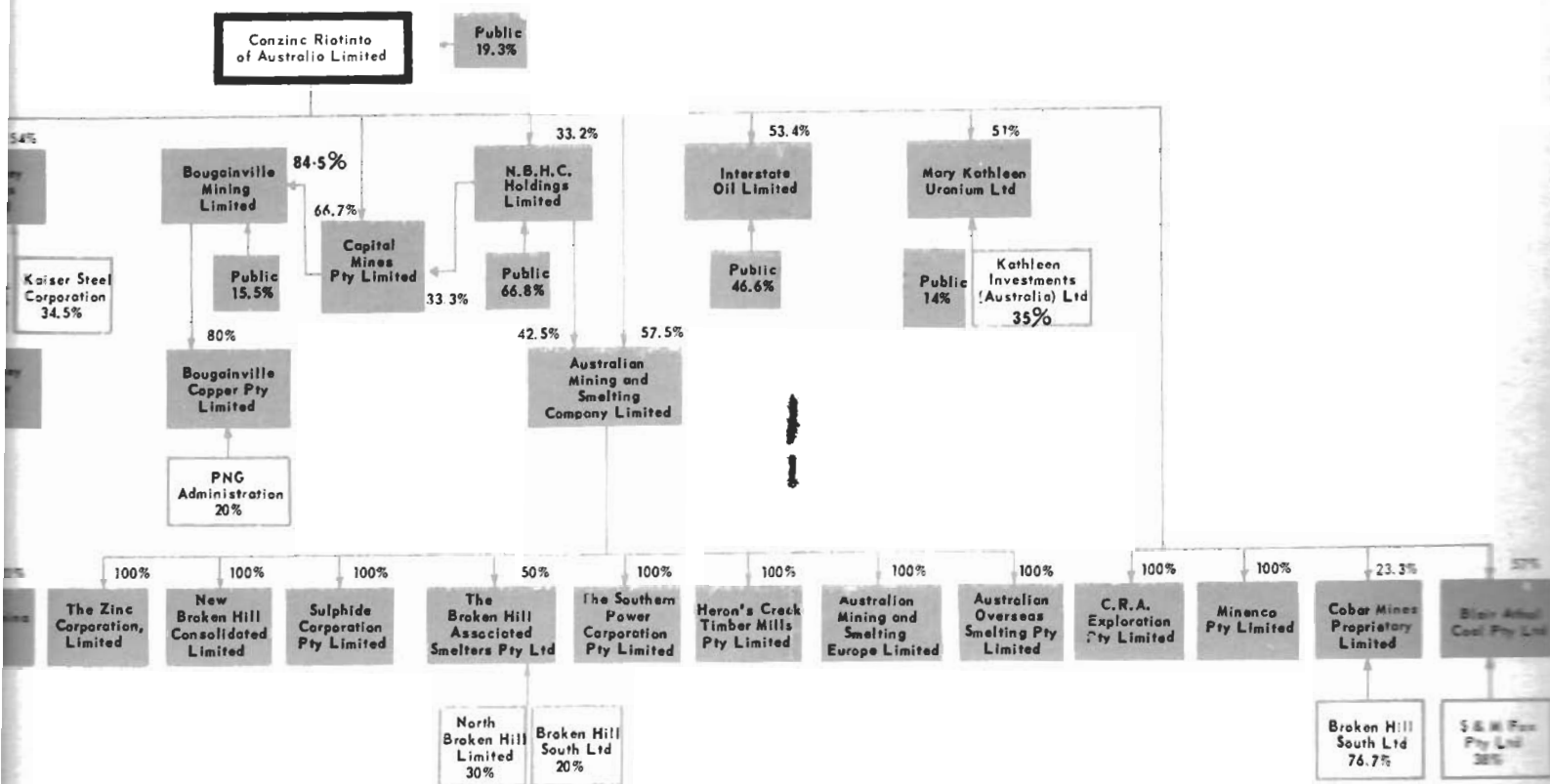
He further stated that it gave him great pleasure to announce that Mr. Michael Somare, Chief Minister of Papua New Guinea, had honoured Bougainville Copper Pty. Limited in accepting an invitation to perform the official opening ceremony.



# Corporate Structure CONZINC RIOTINTO OF AUSTRALIA LIMITED

The diagram of the CRA corporate structure published in September turned out to be somewhat out of date. This one is the latest:





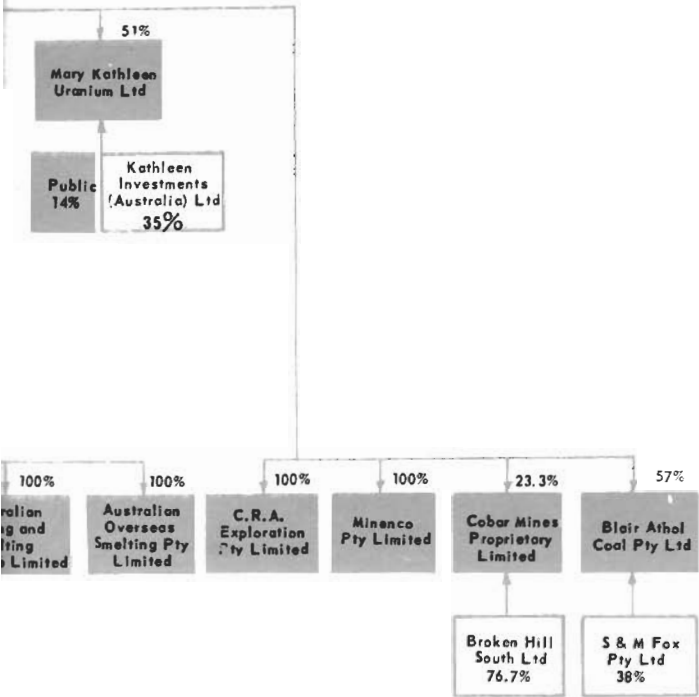


#### MORE FROM THE WAKUNAI SHOW

Far left, the famous Mud Men, making a rare appearance on Bougainville, scared quite a few in the crowd with their mud faces and eerie actions. Centre, Tari Highlanders with makeshift wigs and kundus get ready for their turn in the singsing. Note the beaks of local hornbills round their backs.

#### AND AT ARAWA

National Day celebrations for the Kieta area took place at Tupukas Primary School grounds in Arawa. People came from villages in the Kongara and Koromira and the Nasiois to put on traditional singsings and dances. There were also many lovely dances and singsings by people from other parts of the country, - Kiwais in the Western District of Papua and Talaseas of West New Britain. Picture, bottom, shows Koromira villagers dancing through town.





## FROM THE SAFETY SECTION

LONDON - June 13 (UP) - The Manchester Guardian quoted as an example of "Stoicism" the following unsigned letter, ostensibly from a brick-layer in the Barbador to his contracting firm:

"Respected Sir:

When I got to the building, I found that the hurricane had knocked some bricks off the top. So I rigged up a beam with a pulley at the top of the building and hoisted up a couple of barrels full of bricks. When I had fixed the building, there was a lot of bricks left over.

I hoisted the barrel back again and secured the line at the bottom, and then went up and filled the barrel with extra bricks. Then I went to the bottom and cast off the line.

Unfortunately, the barrel of bricks was heavier than I was and before I knew what was happening the barrel started down, jerking me off the ground. I decided to hang on and half way up I met the barrel coming down and received a severe blow on the shoulder.

I then continued to the top, banging my head against the boom and getting my finger jammed in the pulley. When the barrel hit the ground it burst its bottom, allowing all the bricks to spill out.

I was now heavier than the barrel and so started down again at high speed. Halfway down, I met the barrel coming up and received severe injuries to my shins. When I hit the ground I landed on the bricks, getting several painful cuts from the sharp edges.

At this point, I must have lost my presence of mind, because I let go of the line. The barrel came down giving me another heavy blow on the head, and putting me in the hospital.

I respectfully request Sick Leave."



## HASH HOUSE HARRIERS

Turnout - 14 would be Hashmen. Starting down at the waste dump, the trail soon led up the never ending hill overlooking the Concentrator. Averaging one pace per second we finally made the top. After walking that plank, waiting a few minutes for the old heart to settle, the pack engaged its aching muscles in an effort to conquer that energy sapping climb up to Camp 10. And then, after scrambling down through a riot of vegetation, we reached the bottom and a head count revealed 3 missing. Wilson, Pacini and Anderson - what were you up to in there?

Shades of evening were fast creeping in, and a general panic set in when the trail could not be found. We wildly checked in wrong directions as the raging thirst grew tighter in the throats. The trail was discovered, just in the nick of time, and it was on on non stop to the Hash Halt to be greeted by the two celubrious hares and those beautiful Greenies.

## THAT'S NOT CRICKET!

Panguna Courthouse has been transferred from the sub-district office to the Cricket Club in Married Hill.



Newly elected committee of the 1st Panguna Scout and Guide Group are:- Mr John Ainsworth, chairman, PH 136; Mr Peter Hosking, secretary, B 16; Mr Len Hodder, treasurer, B 16; Guide Captain, Mrs J. Bissaker, 5-245; Brownie leader, Mrs A. Embery, 45 Kupei Road; Group Scout master, Mr Jim Embery, 45 Kupei Road; Rover Scout leader, Mr Jim Bissaker, 5-328; Scout Scouter, Mr Dennis Andrews, B 16; Cub Scouter, Mr Bob Gwyn, B 16; Assistant Cub Scouter, Mr Phillip Davies, B 16.

Above, Panguna scout, Paul Tondopan, son of Leo, industrial relations officer. Paul goes to Arawa High School and last year spent some time working for the company in employment.

## STAFF CHANGES

The following staff changes have recently taken place in the employment section:- recruitment and placement supervisor - Neil Stewart, 5-323; localization and manpower planning supervisor, Bob Struthers, 5-325.

## MORE BABIES

Born to Maria and Mark Lovina at Arawa Hospital recently was Matthew. Mark works at the Supermarket. A girl, Iamo, for Dibura and Mahuta Agara on September 8. Mahuta works for engineering. A son, yet to be named, for Noah and Rosie Saihenen. Noah works for mining.

### STILL MORE ABOUT JELLYFISH

A jellyfish responsible for stinging recently at Loloho has been identified by Dr Racek, Senior Lecturer in Biology, Sydney University. In his letter Dr Pacek states that "the sea wasp forwarded is certainly a most dangerous organism, capable of causing distressing and possible fatal injuries.... I am certain that this particular jellyfish must be held responsible for the more severe injuries recorded in your region."

It is a specimen of Chiropsalmus quadrigatus which has been responsible for some fatalities in the Philippine region. Together with Chironex fleckeri it is responsible for severe stings and fatalities in North Queensland waters. It has been reported to exist in the New Britain region.

The specimen sent for identification was a small one about three inches diameter across the top of the bell. However, this type of jellyfish can reach a diameter of eight inches or more with tentacles up to five feet in length. When it reaches this size stings are extremely severe. During the first 15 minutes pain increases in mounting waves, despite removal of the tentacles. The victim may scream and become irrational. Sudden death may occur. When severe agonising pain is present immediately after stinging apply a constrictive bandage above the knee or elbow on the affected limb. Pour any available form of alcoholic spirit over the affected area. Remove the tentacles with a towel or sand. Start with firm pressure above the tentacles and sweep downwards with diminishing pressure to make sure that as much as possible of the tentacle is removed, not redistributed over the surface of the skin. Do not rub the area. Resuscitate the casualty if necessary. Transport immediately to hospital.

It has been reported that the juice of a slashed green pawpaw has a "beneficial effect" on a sting attributed to this jellyfish.

DR A.G. CUMPSTON  
Senior Medical Officer.

### BIREMPA CAMP - ROAD SAFETY

Action is in hand to re-occupy the accommodation facilities at the Birempa Camp. Certain areas of this camp are already occupied by contractors' personnel and it is anticipated that the population of this camp will progressively increase over the next two or three months.

Recently, several reports have been received by the Security Office, of excessive speeding of vehicles, both company and private, when driving through the Birempa Camp area, which, in several cases, has resulted in near accidents.

A maximum speed limited of 25 m.p.h. applies to the area. Police action and/or company disciplinary action will be imposed against any driver reported for driving at an excessive speed or in an unsafe manner through the Birempa Camp area.

### MANPOWER FIGURES

BCP manpower strength at the end of August was 3,470 - 266 below authorised strength. Of the total, 2,497 were indigenous and 973 European. Largest department was Engineering with a work-force of 878.

### UNITED BABY FOR JOE

Joseph Baraka, compensation and resettlement clerk, and his wife, Theresa, had their fourth baby on National Day at Tunuru. Joe's called him Henry Turgovi. Turgovi is a Tolai word meaning "United"!

### WANTED

Small electric organ. Contact Don Woodford, 5-325



### BALL MILL LINING REPLACED

Number three ball mill had its metal lining replaced in September. This was the first ball mill to undergo such an operation. Picture shows workmen Fred Kastner, l/h fitter; Frank Gardiner, mill mech. foreman and Klaus Hogrefe, mechanical fitter.

### LOLOHO MARRIED FAMILIES ACCOMMODATION

The following rules are brought to the attention of all BCP employees and their families using the Loloho Married families' recreation accommodation.

1. Your I.D. card must be produced at the Loloho Married families office before the keys will be issued for your accommodation.

2. Keys will be issued from the office during the following times:-

7.30 am to 4.15 pm Monday to Thursday  
7.30 am to 7.00 pm Friday  
9.00 am to 7.00 pm Saturday & Sunday

3. Your accommodation must be vacated by 10.00 am on the morning following the last night of booked accommodation.

4. Meals will only be served in the Camp 6 mess during the following times:-

Breakfast 5.30 am to 8.00 am  
Lunch 12.00 pm to 12.45 pm  
Lunch 12.00 pm to 1.00 pm Sunday & Public Holidays.  
Dinner 5.30 pm to 7.00 pm

5. All damage to BCP property must be reported to the officer and charges will be assessed by the coastal camps officer and levied against the person responsible.

5. Married and single houses are always available from Monday to Friday.

6. Employees are reminded that it is not practicable to select houses of their choice. Houses are allotted depending on the size of the family.

### CHRISTMAS VACATION

The Christmas / New Year holiday period will be broken into three divisions for the purposes of booking accommodation at the Loloho Married family accommodation:

- Christmas Saturday December 23 to Tuesday December 26
- Wednesday December 27 to Friday December 29
- New Year Saturday December 30 to Tuesday January 2

All reservations for these times must be made to the Loloho married families recreation office 4-141 before November 30, 1972.

Due to shortage of accommodation we do not anticipate being able to accommodate all the people who have made reservations. It has therefore been decided to place all the reservations into a hat and draw them out on December 4, under supervision. The lucky ones will be advised by telephone.



Children from Arawa High School watch the opening.

### ARAWA HIGH SCHOOL OPENS

Bougainville District's fifth high school, Arawa High, was officially opened by the Minister for Education, Mr Ebia Olewale on September 15. About 400 people, including the District Commissioner for Bougainville, Mr W.T. Brown, and District Superintendent, Mr D. Pitt, gathered for the opening.

In his speech, Mr Olewale said he liked the dual system in schools such as Arawa High. It was good to see such system operating in some schools in the country because it could help the two classes of students - those that are here temporarily while their parents work in large companies like Bougainville Copper, and the local students. (In this system students do many subjects together at one level, while the essential subjects - like English and Maths are shared in different levels.)

The Minister also said he was very pleased that the running of Arawa High School was progressing smoothly as the result of fine co-operation among the staff, the board of governors and the Parents and Citizens Association.

JOHN PIPPIN

### FROM THE HEADMASTER

Our school is situated on a block of land directly opposite the hospital. It consists of eight classrooms, two specialist science rooms, a home economics block, a library, a manual arts workshop and store and an administration block. All buildings are new and becoming well equipped. We have been short of certain items of science equipment, especially chemicals, but this is gradually being rectified. Supplies for a new high school are always slow in coming and here in Bougainville we are on the end of a supply line.

On the staff we have a Welshman, a Canadian and four Australians. Three are qualified to teach their own specialist subjects to Form 6 level and the others to Form 4 level.

There are 121 students attending the school, 62 of whom are indigenous and 59 expatriates. 23 of the expatriates are studying various correspondence courses at levels ranging from Form 2 to Form 5. There are three classes in Form 1. The courses followed are a mixture of Papua New Guinea Syllabus

and Australian Syllabae. The intention is to provide an all-round education to suit the needs of all. Those intending to make their futures outside Papua New Guinea will be able to fit into schools, colleges and universities elsewhere without academic complications. Those remaining in this country will receive courses which will enable them to fit into the local situation.

All students are assessed continuously and three times a year reports are sent home to parents. There will be no full scale examinations in the first three years and it is unlikely that there will be any in Form 4 as the trend today is away from long formal exams.

Next year we shall have 12 staff members and an estimated enrollment of 240 students. Staff have been chosen so that the maximum choice of subjects may be offered.

PETER ELIAS



A chap leaving the group, but returning with Camp Catering - Simon Bonga. He is seen here being farewelled by some of his workmates at the Karoona Tavern. Simon has been a very popular employee, and we wish him well with CCS.



## PANGUNA

Sun. & Tues. Oct. 8 & 10	McLintock	John Wayne Maureen O'Hara
Thur. & Fri. Oct. 12 & 13	Kiss Me Stupid	
Sat. & Mon. Oct. 14 & 16	Yours, Mine and Ours	Henry Fonda Lucille Ball
Sun. & Tues. Oct. 15 & 17	Woman of Straw	Gina Lollobrigida Sean Connery
Thurs. & Fri. Oct. 19 & 20	Anyone Can Play	
Sat. & Mon. Oct. 21 & 23	Sebastian	
Sun. & Tues. Oct. 22 & 24	To Trap a Spy	Robert Vaughanb David McCallum

## ARAWA

Sunday October 15	Boy on a Dolphin	Alan Ladd Clifton Webb
Wednesday October 18	2001 - a Space Odyssey	Keir Dullea Gary Lockwood
Friday October 20	McLintock	John Wayne Maureen O'Hara
Sunday October 22	Bachelor Flat	Tuesday Weld Terry Thomas
Wednesday October 25	Woman of Straw	Gina Lollobrigida Sean Connery
Friday October 27	Yours, Mine and Ours	Henry Fonda Lucille Ball

## HOW THE METRIC SYSTEM WILL AFFECT US

Different target dates are being set for metric conversion for the various sectors of industry and government departments. The first change, by the Bureau of Meteorology, was introduced on the first day of September when temperatures were reported in degrees Celsius instead of degrees Fahrenheit. Here is an easy way of remembering Celsius.

- The flaming forties -  $35^{\circ}\text{C}$  to  $45^{\circ}\text{C}$  ( $95^{\circ}\text{F}$  to  $113^{\circ}\text{F}$ ) and upwards represents heatwave conditions.
- The thirsty thirties -  $25^{\circ}\text{C}$  to  $35^{\circ}\text{C}$  ( $77^{\circ}\text{F}$  to  $95^{\circ}\text{F}$ ) is typical of the warm to hot conditions in summer.
- The temperate twenties -  $15^{\circ}\text{C}$  to  $25^{\circ}\text{C}$  ( $59^{\circ}\text{F}$  to  $77^{\circ}\text{F}$ ) is usually appreciated as being cool to warm.
- The tingling tens -  $5^{\circ}\text{C}$  to  $15^{\circ}\text{C}$  ( $41^{\circ}\text{F}$  to  $59^{\circ}\text{F}$ ) is the range experienced on colder winter days in southern Australia.
- The frosty fives -  $-5^{\circ}\text{C}$  to  $5^{\circ}\text{C}$  ( $23^{\circ}\text{F}$  to  $41^{\circ}\text{F}$ ) represents very cold conditions.

This day also marked the change of expressing barometric pressure in millibars instead of inches. Further changes are anticipated in the following industries in conjunction with the PNG Metric Conversion Commission's programme:

Automotive Industry - progressively from 1972 - 1977.  
Building Construction - between 1974 - 1970.  
Clothing - commencing 1974.



Symbol of the  
PNG Metric Conversion  
Commission

Education - already commenced.  
Plastics and Chemicals - 1973.  
Road Signs - 1974.  
Timber Industry - 1974.  
Weighing Machines - progressively now to 1974.

Changes to metric units have already occurred in horse racing and other sports.

It will be readily seen then that changes will take place which will affect many of us; some to a very small degree, others will be heavily involved.

The motorist, although long familiar with engine capacity being measured in cubic centimetres, - (cc or  $\text{cm}^3$ ), and litres (l); and spark plug sizes being quoted in millimetres - (mm) will eventually have to familiarize himself with road speeds shown in kph - (kilometers per hour) - fuel and oil capacities in litres - tyre pressures in kilo Pascals - kPa.

Those of us who deal with paper work, be it filing, typing or just reading, will soon have to get used to the new sizes of paper which will eventually replace those old faithfuls "quarto" and "foolscap". Not only do the new metric sizes cover those for writing and printing but also for the purposes of charts, plans and drawings.

As more and more food packages arrive in supermarkets, shops and stores marked with metric weight, we are setting nearer the time when this will be the only weight shown. While those weights used at the moment are just the metric equivalents, for example, a pound jar of jam would also have 454g (gram) marked on it, the stocking of a 500g jar will soon be obvious. Price comparisons between various articles will be much easier when all commodities are sold to rounded figures.

These changes, and the many others that are likely to occur, will mean that we need to learn, at least in part, the new metric system. It will effect us at work, at home, at sport and in our leisure.

One remaining and very important aspect of the change, with a great bearing on training, is safety. For instance, the need for all concerned to understand and respect revised symbols for indicating safe working loads on all equipments. This underlines the importance of getting people to think in metric terms rather than staying tied to time consuming, error prone conversion of weights and measures from one system to the other.

Something to remember for the near future: "Every time we calculate in Imperial and convert to Metric afterwards, we will add to the cost of the calculation, but nothing to its value".

## LUTHERAN PASTOR

Pastor Dean Zweck has replaced Max Scheiman as Lutheran Pastor for Panguna and Arawa.

## FOR SALE

14 ft Arrow class catamaran. One season. Tasker sails. \$600. Richard Wilson 4-145, (home) 951458.



Above, scenes from the Aussie Rules tour of Rabaul.  
Below, Panguna boxing.



### COLUMN THREE

In and around Panguna recently.....

For those keen bushwalkers, and we know there are a few, don't be surprised if, during the next few weeks, you are "ambushed" by a platoon from the Pacific Islands Regiment while you are taking a nap, or having a bathe in a mountain stream. There are three platoons patrolling Bougainville at the moment, for familiarisation purposes, and during the four week period some of the groups will be overnighing at Panguna and having a tour of the operation. The first group to overnigh here reckon Panguna is "Number 1", so no need to worry fellas.....

Another point of interest, recently we had a Civil Defence Emergency Transceiver set up at Panguna by the Department of Civil Defence from Port Moresby. This will allow regular radio hook-up between Panguna, Port Moresby and other stations in the chain, and will assure us of receiving or providing immediate assistance in the case of an emergency. Make you feel safer?.....

Back on site sporting diamond clusters and big smiles, Mr. Ballmer's secretary, Noelle Due. She and Ken McDonald, from the chemistry laboratory at the Concentrator, plan to marry early next year down in Melbourne. Noelle visited the crew at '95' while they were down there and she reports that things are fairly normal.....

### FOR SQUASH FANS

As part of a tour of Papua New Guinea, sponsored by the Rothmans Foundation and Ansett Airlines, SQUASH champs Ken Hiscoe and Geoff Hunt will visit Bougainville on October 14 and 15.

On the Saturday afternoon they will put on an exhibition match. On Sunday they will be available for coaching; anyone interested should contact Neil Stewart as soon as possible.

A minimal entrance fee will be charged for people wishing to watch the exhibition, and, owing to limited space in the gallery an idea of numbers, again to Neil Stewart, will aid the Squash Club in catering for as many spectators as possible.

### APPRENTICE NEWS

. At a recent presentation evening at Camp 2, comments were made regarding cuff links worn by many apprentices. These are a quality piece of jewellery and have been purchased for resale by the Training Camp Committee. Any person interested should contact Bob Duffy on 5-372. The price is \$2.50 per pair. Limited stocks are available.

### SHIP'S DUE LIST

<u>Vessel &amp; Agents</u>		<u>ETA</u>	<u>ETD</u>
Miryu Maru	General Cargo	-	-
Burns Philp			
Brovig	TBN	8.10.72	10.10.72
B.C.P.L.			
Weser Carrier	General Cargo	10.10.72	16.10.72
B.C.P.L.			
Bougainville Maru	Cu. Concentrates	16.10.72	18.10.72
Steamships			
Pacific	General Cargo	16.10.72	21.10.72
B.C.P.L.			
Brovig	TBN	Early November	
B.C.P.L.			